

# Missouri Outdoor Recreational Access Program (MRAP) Area Map



**Area Name:** Quad-E Wildlife Ranch

**County:** Hickory      **Size:** 960 acres

**Township:** 27N, **Range:** 20W, **Sections:** 6, 7

**Public Access Type:** Public Archery Hunting

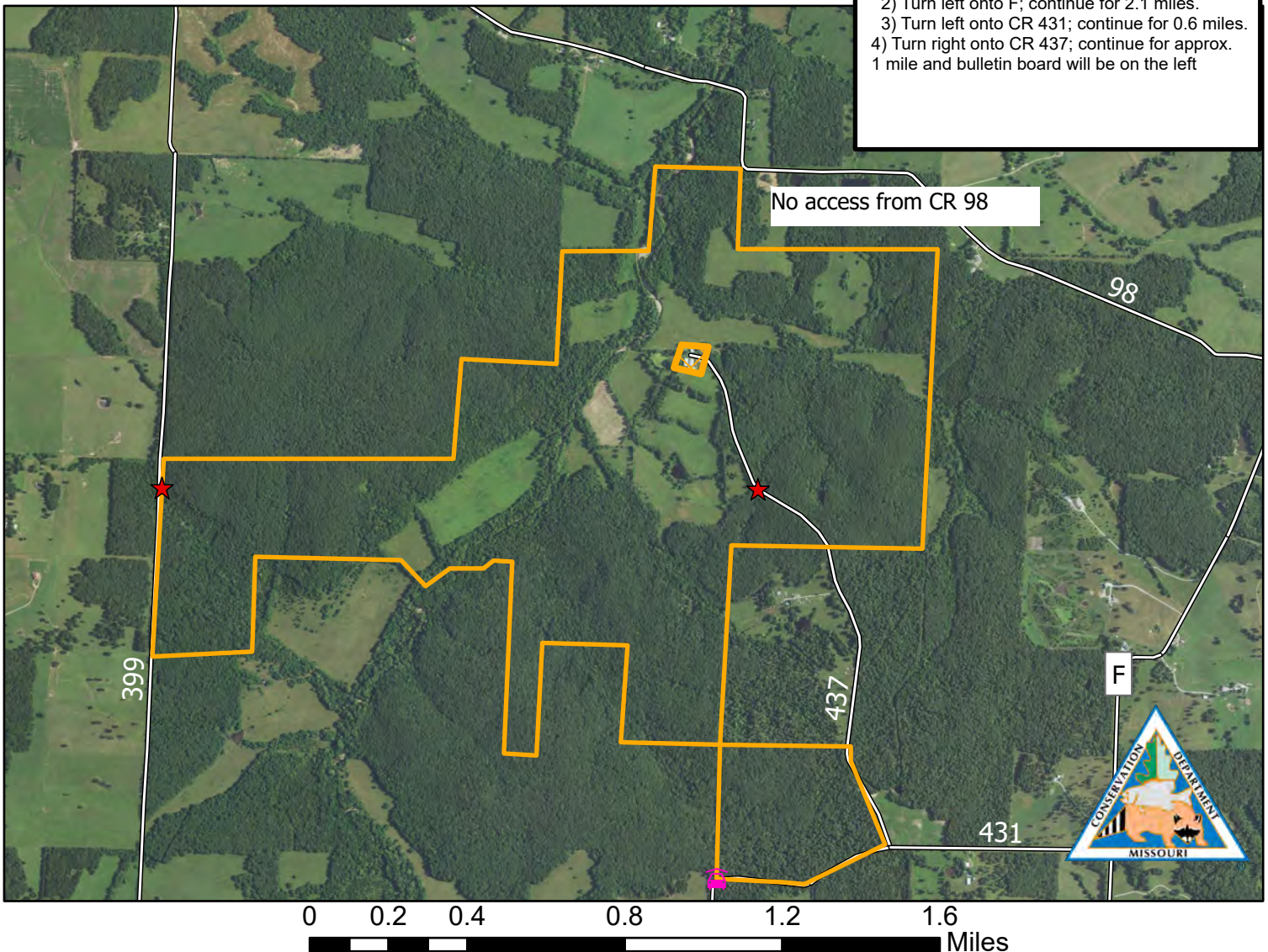
**Area open 1 hr before sunrise to 1 hr after sunset**

## Hickory County



Directions From Preston:

- 1) Follow Hwy 54 east approx. 2.5 miles.
- 2) Turn left onto F; continue for 2.1 miles.
- 3) Turn left onto CR 431; continue for 0.6 miles.
- 4) Turn right onto CR 437; continue for approx. 1 mile and bulletin board will be on the left



PLEASE RESPECT PRIVATE PROPERTY  
WALK-IN HUNTING ONLY  
ALL OTHER ACTIVITIES PROHIBITED  
PARKING IN DESIGNATED AREA ONLY  
STAY ON MRAP PROPERTY; NO TRESPASSING  
NO TRAPPING  
NO LITTERING INCLUDING SPENT SHELLS  
NO TARGET SHOOTING, CAMPING, OR ALCOHOL  
NO FIREWORKS, BIKING, HORSEBACK RIDING  
DO NOT OPEN GATES & AVOID DAMAGING FENCES  
NO EQUIPMENT OR GEAR MAY BE LEFT OVERNIGHT

## Legend

- Additional Parking
- Parking and Registration
- No Entry Zone
- MRAP Boundary

**SPECIAL REGULATIONS APPLY. GO TO: [HTTPS://MDC.MO.GOV/MRAP](https://mdc.mo.gov/mrap)**